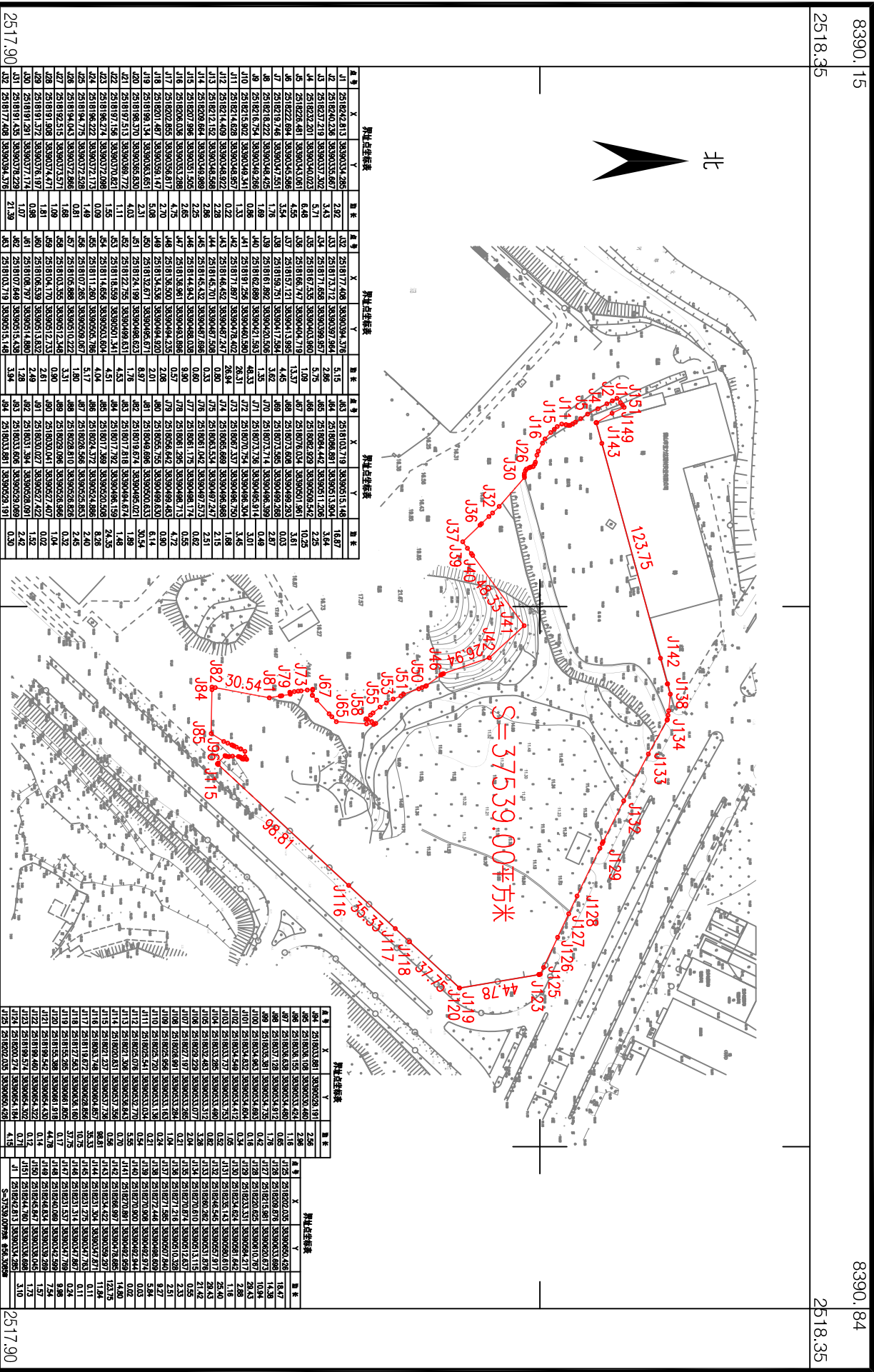


鹤山市2024年度第八十三批次城镇建设用地 征收土地位置范围图

单位: m, m²



界址点坐标表			界址点坐标表			界址点坐标表		
点号	X	Y	点号	X	Y	点号	X	Y
J1	2518242.813	3839033.4295	J32	2518177.408	3839039.476	J63	2518103.719	38390515.148
J2	2518240.238	3839033.5687	J33	2518173.712	3839039.784	J64	2518088.891	38390515.904
J3	2518237.219	3839033.7292	J34	2518167.658	3839039.957	J65	2518084.442	38390511.208
J4	2518232.201	3839034.0023	J35	2518155.525	3839040.190	J66	2518082.829	38390509.542
J5	2518228.481	3839034.3368	J36	2518143.419	3839040.478	J67	2518078.024	38390501.983
J6	2518222.894	3839034.6398	J37	2518131.325	3839040.719	J68	2518073.885	38390499.283
J7	2518218.746	3839034.9251	J38	2518119.271	3839041.029	J69	2518071.514	38390486.289
J8	2518212.422	3839035.2051	J39	2518107.173	3839041.354	J70	2518071.514	38390486.289
J9	2518208.124	3839035.4825	J40	2518095.089	3839041.683	J71	2518071.514	38390486.289
J10	2518203.849	3839035.7571	J41	2518082.982	3839041.952	J72	2518071.514	38390486.289
J11	2518199.574	3839036.0339	J42	2518070.852	3839042.222	J73	2518068.689	38390478.989
J12	2518195.300	3839036.3111	J43	2518068.701	3839042.492	J74	2518068.689	38390478.989
J13	2518191.025	3839036.5883	J44	2518056.532	3839042.762	J75	2518068.689	38390478.989
J14	2518186.750	3839036.8655	J45	2518044.362	3839043.032	J76	2518068.689	38390478.989
J15	2518182.475	3839037.1427	J46	2518032.192	3839043.302	J77	2518068.689	38390478.989
J16	2518178.200	3839037.4199	J47	2518020.022	3839043.572	J78	2518068.689	38390478.989
J17	2518173.925	3839037.6971	J48	2518007.852	3839043.842	J79	2518068.689	38390478.989
J18	2518169.650	3839037.9743	J49	2518000.000	3839044.112	J80	2518068.689	38390478.989
J19	2518165.375	3839038.2515	J50	2518000.000	3839044.382	J81	2518068.689	38390478.989
J20	2518161.100	3839038.5287	J51	2518000.000	3839044.652	J82	2518068.689	38390478.989
J21	2518156.825	3839038.8059	J52	2518000.000	3839044.922	J83	2518068.689	38390478.989
J22	2518152.550	3839039.0831	J53	2518000.000	3839045.192	J84	2518068.689	38390478.989
J23	2518148.275	3839039.3603	J54	2518000.000	3839045.462	J85	2518068.689	38390478.989
J24	2518144.000	3839039.6375	J55	2518000.000	3839045.732	J86	2518068.689	38390478.989
J25	2518139.725	3839039.9147	J56	2518000.000	3839046.002	J87	2518068.689	38390478.989
J26	2518135.450	3839040.1919	J57	2518000.000	3839046.272	J88	2518068.689	38390478.989
J27	2518131.175	3839040.4691	J58	2518000.000	3839046.542	J89	2518068.689	38390478.989
J28	2518126.900	3839040.7463	J59	2518000.000	3839046.812	J90	2518068.689	38390478.989
J29	2518122.625	3839041.0235	J60	2518000.000	3839047.082	J91	2518068.689	38390478.989
J30	2518118.350	3839041.3007	J61	2518000.000	3839047.352	J92	2518068.689	38390478.989
J31	2518114.075	3839041.5779	J62	2518000.000	3839047.622	J93	2518068.689	38390478.989
J32	2518110.000	3839041.8551	J63	2518000.000	3839047.892	J94	2518068.689	38390478.989
J33	2518105.725	3839042.1323	J64	2518000.000	3839048.162	J95	2518068.689	38390478.989
J34	2518101.450	3839042.4095	J65	2518000.000	3839048.432	J96	2518068.689	38390478.989
J35	2518097.175	3839042.6867	J66	2518000.000	3839048.702	J97	2518068.689	38390478.989
J36	2518092.900	3839042.9639	J67	2518000.000	3839048.972	J98	2518068.689	38390478.989
J37	2518088.625	3839043.2411	J68	2518000.000	3839049.242	J99	2518068.689	38390478.989
J38	2518084.350	3839043.5183	J69	2518000.000	3839049.512	J100	2518068.689	38390478.989
J39	2518080.075	3839043.7955	J70	2518000.000	3839049.782	J101	2518068.689	38390478.989
J40	2518075.800	3839044.0727	J71	2518000.000	3839050.052	J102	2518068.689	38390478.989
J41	2518071.525	3839044.3500	J72	2518000.000	3839050.322	J103	2518068.689	38390478.989
J42	2518071.525	3839044.3500	J73	2518000.000	3839050.592	J104	2518068.689	38390478.989
J43	2518071.525	3839044.3500	J74	2518000.000	3839050.862	J105	2518068.689	38390478.989
J44	2518071.525	3839044.3500	J75	2518000.000	3839051.132	J106	2518068.689	38390478.989
J45	2518071.525	3839044.3500	J76	2518000.000	3839051.402	J107	2518068.689	38390478.989
J46	2518071.525	3839044.3500	J77	2518000.000	3839051.672	J108	2518068.689	38390478.989
J47	2518071.525	3839044.3500	J78	2518000.000	3839051.942	J109	2518068.689	38390478.989
J48	2518071.525	3839044.3500	J79	2518000.000	3839052.212	J110	2518068.689	38390478.989
J49	2518071.525	3839044.3500	J80	2518000.000	3839052.482	J111	2518068.689	38390478.989
J50	2518071.525	3839044.3500	J81	2518000.000	3839052.752	J112	2518068.689	38390478.989
J51	2518071.525	3839044.3500	J82	2518000.000	3839053.022	J113	2518068.689	38390478.989
J52	2518071.525	3839044.3500	J83	2518000.000	3839053.292	J114	2518068.689	38390478.989
J53	2518071.525	3839044.3500	J84	2518000.000	3839053.562	J115	2518068.689	38390478.989
J54	2518071.525	3839044.3500	J85	2518000.000	3839053.832	J116	2518068.689	38390478.989
J55	2518071.525	3839044.3500	J86	2518000.000	3839054.102	J117	2518068.689	38390478.989
J56	2518071.525	3839044.3500	J87	2518000.000	3839054.372	J118	2518068.689	38390478.989
J57	2518071.525	3839044.3500	J88	2518000.000	3839054.642	J119	2518068.689	38390478.989
J58	2518071.525	3839044.3500	J89	2518000.000	3839054.912	J120	2518068.689	38390478.989
J59	2518071.525	3839044.3500	J90	2518000.000	3839055.182	J121	2518068.689	38390478.989
J60	2518071.525	3839044.3500	J91	2518000.000	3839055.452	J122	2518068.689	38390478.989
J61	2518071.525	3839044.3500	J92	2518000.000	3839055.722	J123	2518068.689	38390478.989
J62	2518071.525	3839044.3500	J93	2518000.000	3839055.992	J124	2518068.689	38390478.989
J63	2518071.525	3839044.3500	J94	2518000.000	3839056.262	J125	2518068.689	38390478.989
J64	2518071.525	3839044.3500	J95	2518000.000	3839056.532	J126	2518068.689	38390478.989
J65	2518071.525	3839044.3500	J96	2518000.000	3839056.802	J127	2518068.689	38390478.989
J66	2518071.525	3839044.3500	J97	2518000.000	3839057.072	J128	2518068.689	38390478.989
J67	2518071.525	3839044.3500	J98	2518000.000	3839057.342	J129	2518068.689	38390478.989
J68	2518071.525	3839044.3500	J99	2518000.000	3839057.612	J130	2518068.689	38390478.989
J69	2518071.525	3839044.3500	J100	2518000.000	3839057.882	J131	2518068.689	38390478.989
J70	2518071.525	3839044.3500	J101	2518000.000	3839058.152	J132	2518068.689	38390478.989
J71	2518071.525	3839044.3500	J102	2518000.000	3839058.422	J133	2518068.689	38390478.989
J72	2518071.525	3839044.3500	J103	2518000.000	3839058.692	J134	2518068.689	38390478.989
J73	2518071.525	3839044.3500	J104	2518000.000	3839058.962	J135	2518068.689	38390478.989
J74	2518071.525	3839044.3500	J105	2518000.000	3839059.232	J136	2518068.689	38390478.989
J75	2518071.525	3839044.3500	J106	2518000.000	3839059.502	J137	2518068.689	38390478.989
J76	2518071.525	3839044.3500	J107	2518000.000	3839059.772	J138	2518068.689	38390478.989
J77	2518071.525	3839044.3500	J108	2518000.000	3839060.042	J139	2518068.689	38390478.989
J78	2518071.525	3839044.3500	J109	2518000.000	3839060.312	J140	2518068.689	38390478.989
J79	2518071.525	3839044.3500	J110	2518000.000	3839060.582	J141	2518068.689	38390478.989
J80	2518071.525	3839044.3500	J111	2518000.000	3839060.852	J142	2518068.689	38390478.989
J81	2518071.525	3839044.3500	J112	2518000.000	3839061.122	J143	2518068.689	38390478.989
J82	2518071.525	3839044.3500	J113	2518000.000	3839061.392	J144	2518068.689	38390478.989
J83	2518071.525	3839044.3500	J114	2518000.000	3839061.662	J145	2518068.689	38390478.989
J84	2518071.525	3839044.3500	J115	2518000.000	3839061.932	J146	2518068.689	38390478.989
J85	2518071.525	3839044.3500	J116	2518000.000	3839062.202	J147	2518068.689	38390478.989
J86	2518071.525	3839044.3500	J117	2518000.000	3839062.472	J148	2518068.689	38390478.989
J87	2518071.525	3839044.3500	J118	2518000.000	3839062.742	J149	2518068.689	38390478.989
J88	2518071.525	3839044.3500	J119	2518000.000	3839063.012	J150	2518068.689	38390478.989
J89	2518071.525	3839044.3500	J120	2518000.000	3839063.282	J151	2518068.689	38390478.989
J90	2518071.525	3839044.3500	J121	2518000.000	3839063.552	J152	2518068.689	38390478.989
J91	2518071.525	3839044.3500	J122	2518000.000	3839063.822	J153	2518068.689	38390478.989
J92	2518071.525	3839044.3500	J123	2518000.000	3839064.092	J154	2518068.689	38390478.989
J93	2518071.525	3839044.3500	J124	2518000.000	3839064.362	J155	2518068.689	38390478.989
J94	2518071.525	3839044.3500	J125	2518000.000	3839064.632	J156	2518068.689	38390478.989
J95	2518071.525	3839044.3500	J126	2518000.000	3839064.902	J157	2518068.689	38390478.989
J96	2518071.525	3839044.3500	J127	2518000.00				