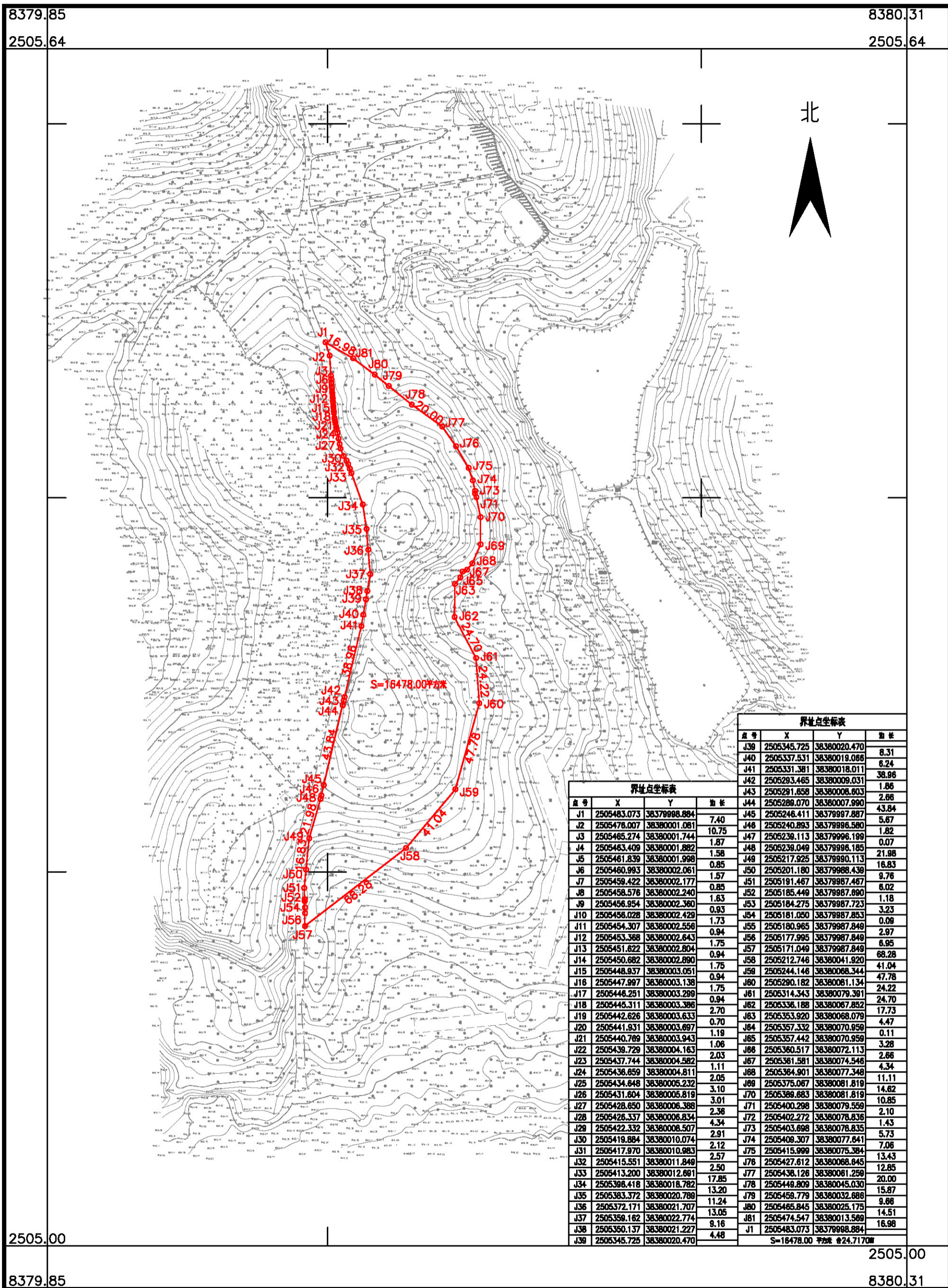


鹤山市鹤城镇公益性墓园二期建设项目用地拟征收土地范围图

鹤山市鹤城镇鹤城村委会

单位: m.m²



界址点坐标表

点号	X	Y	边长
J39	2505345.725	38380020.470	8.31
J40	2505337.531	38380019.066	6.24
J41	2505331.381	38380018.011	38.96
J42	2505293.465	38380009.031	1.86
J43	2505291.658	38380008.603	2.66
J44	2505288.070	38380007.990	43.84
J45	2505246.411	38379997.887	5.67
J46	2505240.893	38379996.580	1.82
J47	2505239.113	38379996.199	0.07
J48	2505239.049	38379996.185	21.98
J49	2505217.925	38379990.113	16.83
J50	2505201.180	38379988.439	9.76
J51	2505191.467	38379987.467	6.02
J52	2505185.449	38379987.890	1.18
J53	2505184.275	38379987.723	3.23
J54	2505181.050	38379987.853	0.09
J55	2505180.965	38379987.849	2.97
J56	2505177.995	38379987.849	6.95
J57	2505171.049	38379987.849	68.28
J58	2505212.746	38380041.920	41.04
J59	2505244.146	38380068.344	47.78
J60	2505290.182	38380081.134	24.22
J61	2505314.343	38380079.391	24.70
J62	2505336.188	38380067.852	17.73
J63	2505353.920	38380068.079	4.47
J64	2505357.332	38380070.959	0.11
J65	2505357.442	38380070.959	3.28
J66	2505360.517	38380072.113	2.66
J67	2505361.581	38380074.546	4.34
J68	2505364.901	38380077.348	11.11
J69	2505375.067	38380081.819	14.82
J70	2505389.683	38380081.819	10.85
J71	2505400.298	38380079.559	2.10
J72	2505402.272	38380078.836	1.43
J73	2505403.698	38380078.835	5.73
J74	2505409.307	38380077.641	7.06
J75	2505415.999	38380075.384	13.43
J76	2505427.612	38380068.645	12.85
J77	2505438.126	38380061.250	20.00
J78	2505449.809	38380045.030	15.87
J79	2505459.779	38380032.686	9.66
J80	2505465.845	38380025.175	14.51
J81	2505474.547	38380013.589	16.98
J1	2505483.073	38379998.884	4.48
S=16478.00平方米 @24.7170亩			

湖南省地质工程勘察院有限公司江门分公司

2026年2月数字化制图
2000国家大地坐标系, 中央子午线114度
1985国家高程基准, 等高距为1米
2007年版式

1:2000

绘图员: 李穆花
检查员: 金祥
审核员: 廖军华